



TRISEP® DS Food & Dairy

4.3” Diameter UPO20 Series

TRISEP® sanitary membrane elements for food & dairy applications have a long history of outstanding, stable field performance. NADIR® UPO20 polyethersulfone (PES) membrane with a nominal 20,000 Da molecular weight cut-off offers high protein rejection in combination with high flux rates. TRISEP elements are available with a number of different feed spacers and in all sizes common in the industry. TRISEP DS elements are built with FDA compliant materials, are compliant with European food regulations (EU 10/2011 and EC 1935/2004) and comply with USDA standards.

MEMBRANE CHARACTERISTICS

Membrane	NADIR® UPO20
Membrane Type	Polyethersulfone (PES)
Nominal M.W.C.O. (Da)	20,000

DESIGN INFORMATION

Model	Membrane Area m ² (ft ²)	Feed Spacer Thickness (mil) ^a
TRISEP® DS UPO20 4333-31	7.6 (82)	31
TRISEP® DS UPO20 4333-46	6.3 (68)	46
TRISEP® DS UPO20 4333-80	4.3 (46)	80
TRISEP® DS UPO20 4336-31	8.2 (88)	31
TRISEP® DS UPO20 4336-46	6.8 (73)	46
TRISEP® DS UPO20 4336-80	4.6 (50)	80

^a All models on this sheet have a netting outer wrap and diamond shaped feed spacers.

OPERATING PARAMETERS

Maximum Operating Pressure	10 bar (145 psi)
Maximum Operating Temperature	50°C (122°F)
Cleaning pH/Temperature Range¹	1.5 - 11.5 at 50°C (122°F)
Cleaning Chlorine Tolerance	200 ppm for sanitization at pH ≥ 10.5
Maximum Pressure Drop	1 bar (15 psi) per element; 4 bar (60 psi) per housing

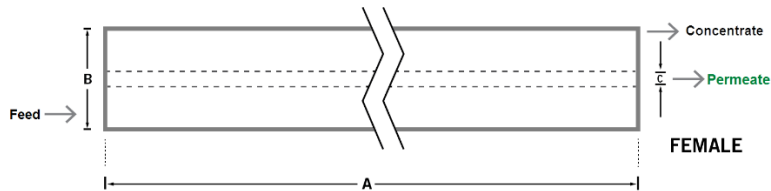
¹ Refer to temperature and pH limits in Membrane Cleaning Guide - Food & Dairy: UF & MF Elements (TSG-C-004).

PHYSICAL DIMENSIONS

Model	Element Weight kg (lb) ^b	Dim. A mm (inches)	Dim. B mm (inches)	Dim. C ^c mm (inches)	Permeate Tube
TRISEP® DS UP020 4333-31	4 (9)	838 (33.0)	109.5 (4.3)	21.1 (0.83)	Female
TRISEP® DS UP020 4333-46	4 (9)	838 (33.0)	109.5 (4.3)	21.1 (0.83)	Female
TRISEP® DS UP020 4333-80	4 (9)	838 (33.0)	109.5 (4.3)	21.1 (0.83)	Female
TRISEP® DS UP020 4336-31	4 (9)	902 (35.5)	109.5 (4.3)	21.1 (0.83)	Female
TRISEP® DS UP020 4336-46	4 (9)	902 (35.5)	109.5 (4.3)	21.1 (0.83)	Female
TRISEP® DS UP020 4336-80	4 (9)	902 (35.5)	109.5 (4.3)	21.1 (0.83)	Female

^b Shipping weight is dependent on packaging material and quantity shipped.

^c Dimension "C" is the Inner Diameter.



IMPORTANT INFORMATION

- Start-up:** MANN+HUMMEL Water & Fluid Solutions recommends flushing elements for 30 minutes at low pressure and discarding permeate during the flush prior to operation. For a more detailed start-up procedure, please see Element Start-Up Guide – System Start-Up (TSG-O-005).
- Cleaning:** TRISEP® membrane elements must be cleaned periodically to ensure proper operation and to prevent membrane damage. Please see Membrane Cleaning Guide – Food & Dairy: UF & MF Elements (TSG-C-004).
- Storage:** TRISEP membrane elements must be stored appropriately to ensure proper operation and to prevent membrane damage. Please see Element Storage Guides (TSG-O-009 & TSG-O-010).
- Regulatory:** All models on this sheet conform to USDA 3A sanitary standard 45-03, use FDA (CFR Title 21) compliant materials, comply with EU regulation (EC) No. 1935/2004 and No. 10/2011, and have Halal and Kosher certifications.

CUSTOMIZABLE SPECIALTY ELEMENTS

MANN+HUMMEL Water & Fluid Solutions offers a full range of membranes and element designs for challenging water and process applications. Technologies include low-fouling RO, submerged UF, continuous high temperature, ultra-high pressure, unique sanitary designs and more. Contact us to customize a product that satisfies your specific requirements.

Contact

Europe
 Germany: +49 611 962 6001
 Italy: +39 0721 1796201
 info@microdyn-nadir.com

Americas
 USA: +1 805 964 8003
 sales.mnus@microdyn-nadir.com

Asia
 Singapore: +65 6457 7533
 China: +86 10 8413 9860
 waterchina@mann-hummel.com