



TRISEP® ACM1

High Rejection

Brackish Water RO Elements

The TRISEP® ACM series of brackish water RO membranes is versatile enough to be used in a wide variety of water purification and process applications. ACM1 membrane elements offer very high solute rejection in a variety of strong and durable spiral-wound element designs that may be customized to meet customer requirements.

MEMBRANE CHARACTERISTICS

Membrane	ACM1
Stabilized Salt Rejection (%)	99.5
Minimum Salt Rejection (%)	99.0

DESIGN INFORMATION

Model	Part Number	Permeate Flow m ³ /day (GPD) ^a	Membrane Area m ² (ft ²)	Feed Spacer Thickness (mil) ^b
TRISEP® 2540-ACM1-TSF	164000251	2.1 (550)	2.4 (26)	31
TRISEP® 4040-ACM1-TSF	161020442	7.2 (1,900)	7.9 (85)	31

a Test conditions: 2,000 ppm NaCl, 15.5 bar (225 psi), 25°C (77°F), 15% recovery, pH 8.0, 30 minutes operation. Flow rates will be no more than 15% below the values shown. Product specifications may change without notice as design revisions occur.

b All models on this sheet have fiberglass outer wrap. All 47 mil feed spacers are parallel; all other models have diamond shaped feed spacers.

OPERATING PARAMETERS

Maximum Operating Pressure	41 bar (600 psi)
Maximum Operating Temperature	45°C (113°F)
Cleaning pH Range¹	1.0 - 12.0
Chlorine Tolerance²	< 0.1 ppm
Maximum Pressure Drop	1 bar (15 psi) per element; 4 bar (60 psi) per housing
Maximum SDIs	5.0
Maximum Turbidity	1 NTU

¹ Refer to temperature and pH limits in Membrane Cleaning Guide - Water Application Elements (TSG-C-001).

² Pretreatment is recommended for the removal of free chlorine and other oxidizing agents to prevent damage to membranes. Oxidizing agents, such as free chlorine, in contact with polyamide membranes may result in shortened operating life or membrane failure. Such oxidation damage is excluded from warranty. Refer to Membrane Operating Guide - Recommendations for Water Purification (TSG-O-012).

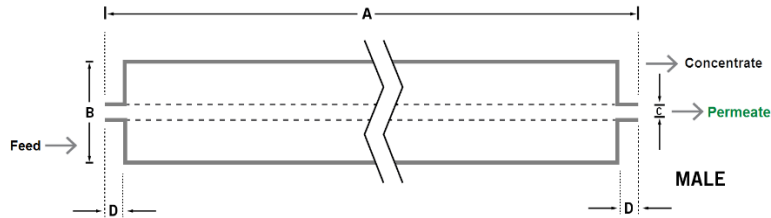
PHYSICAL DIMENSIONS

Model	Element Weight kg (lb) ^c	Dim. A mm (inches)	Dim. B mm (inches)	Dim. C ^d mm (inches)	Permeate Tube ^e
TRISEP® 2540-ACM1-TSF	3 (7)	1,016 (40.0)	64 (2.5)	19.1 (0.75)	Male
TRISEP® 4040-ACM1-TSF	4 (9)	1,016 (40.0)	99 (3.9)	19.1 (0.75)	Male

c Shipping weight is dependent on packaging material and quantity shipped.

d Dimension "C" is the Outer Diameter.

e Male elements have a protruding permeate tube, indicated as "D" in the diagram. Dimension "D" is 25.4 mm (1.0 in).



IMPORTANT INFORMATION

Start-up: MICRODYN-NADIR recommends flushing elements for 30 minutes at low pressure and discarding permeate during the flush prior to operation. For a more detailed start-up procedure, please see Element Start-Up Guide – System Start-Up (TSG-O-005).

Cleaning: TRISEP® membrane elements must be cleaned periodically to ensure proper operation and to prevent membrane damage. Please see Membrane Cleaning Guide – Water Application Elements (TSG-C-001).

Storage: TRISEP membrane elements must be stored appropriately to ensure proper operation and to prevent membrane damage. Please see Element Storage Guides (TSG-O-009 & TSG-O-010).

CUSTOMIZABLE SPECIALTY ELEMENTS

MICRODYN-NADIR offers a full range of membranes and element designs for challenging water and process applications. Technologies include low-fouling RO, submerged UF, continuous high temperature, ultra-high pressure, unique sanitary designs and more. Contact MICRODYN-NADIR to customize a product that satisfies your specific requirements.

Contact

Europe

Germany: +49 611 962 6001
Italy: +39 0721 1796201
info@microdyn-nadir.com

Americas

USA: +1 805 964 8003
sales.mnus@microdyn-nadir.com

Asia

Singapore: +65 6457 7533
China: +86 10 8413 9860
waterchina@mann-hummel.com